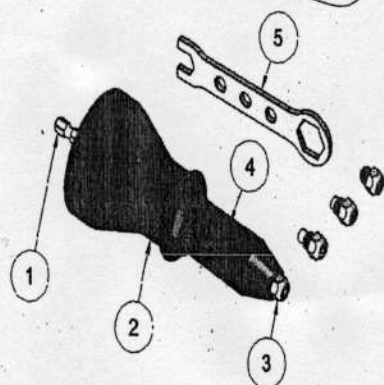


# Riveter Head WRIB-6.4A INSTRUCTION MANUAL

SERG-H64A

SERG-H64A-T



## Technical Data

|                      |                                   |
|----------------------|-----------------------------------|
| Model No.            | SERG-H64A                         |
| Dimensions           | 59mm x173mm(2-11/32 x 6-3/4 inch) |
| Net Weight           | 330g=0.73 lbs                     |
| Gross Weight         | 500g=1.10 lbs                     |
| Nosepiece            | 3.2mm(1/8), 4.0mm(5/32)           |
| Nosepiece            | 4.8mm(3/16), 6.4mm(1/4)           |
| Hex Shank            | 1/4 (6.35 mm)                     |
| Cordless Drill       | 14.4V ,18V                        |
| Cordless Drive       | 14.4V ,18V                        |
| Reversible electric  | Drill/Drive                       |
| Reversible pneumatic | Drill/Drive                       |
| Min. Torque Strength | 50 Nm = 37 ft/lbs                 |
| Max. rpm             | 1,000 rpm                         |

## Overview

|   |              |                      |
|---|--------------|----------------------|
| 1 | Hex Shank    | 1/4 (6.35 mm)        |
| 2 | Housing      | PA+GF                |
| 3 | Nosepiece    | 3.2, 4.0, 4.8, 6.4mm |
| 4 | Sight Window | Blind Rivet Loading  |
| 5 | Wrench       | 1PC                  |

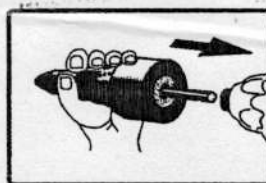
## Safety Note

Please note the following safety notes to avoid malfunctions, damage or physical injury:

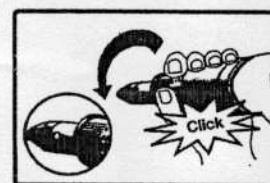
- Please observe all safety notes of the used driving tool (drill)
- Always switch off the driving tool and pull the power plug before maintaining the blind Riveting attachment, e.g. changing the nosepieces or when not in use.
- Only use the blind boring attachment as indicated in this manual for setting blind Rivets. The unit is not designed for continuous, professional use
- Always secure the work piece.
- Do not wear loose, clothing or jewellery. Tie up hair or clothing cannot get into moving parts.
- Persons with limited physical, sensorial or mental abilities are not allowed to use the unit, unless they are supervised for their safety by a qualified person or are briefed by the responsible person how to use the unit.
- Only use the blind Riveting attachment with the included nosepieces.
- Should the unit become damaged do not use it and have it repaired by a professional or contact our customer support department. Do not disassemble the unit or try repairing it yourself.
- Do not continue using the unit if it was damaged or the unit was dropped down. Please contact our customer support service.

## Assembling and Using Before first Use

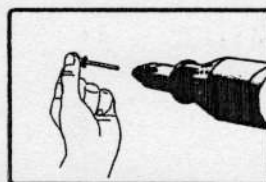
Remove the unit and the accessory out of the packaging. Keep packaging materials out of reach of children. There is risk of suffocation.



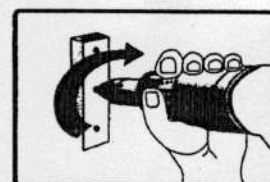
1



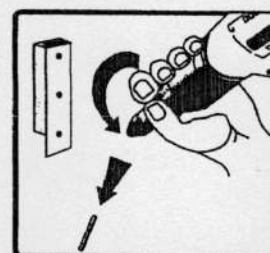
2



3



4



5