



Пневмо-гидравлический заклёпочник  
для установки вытяжных заклёпок

## REVTOOL RIV503



РУКОВОДСТВО ПОЛЬЗОВАТЕЛЯ

**INDEX**

WARRANTY.....	16
TECHNICAL DATA.....	17
ACCESSORIES SUPPLIED.....	18
ACCESSORIES ON REQUEST.....	19
SAFETY MEASURES.....	20
OPERATING INSTRUCTIONS.....	20
SIZE CHANGING AND MAINTENANCE.....	21
OIL TOPPING UP.....	22
ELIMINATION OF THE TOOL.....	22
LIST OF SPARE PARTS.....	23

**WARRANTY**

The warranty has a validity of 12 months, as of the date indicated on the invoice.

The warranty only covers replaced parts; labour is not included.

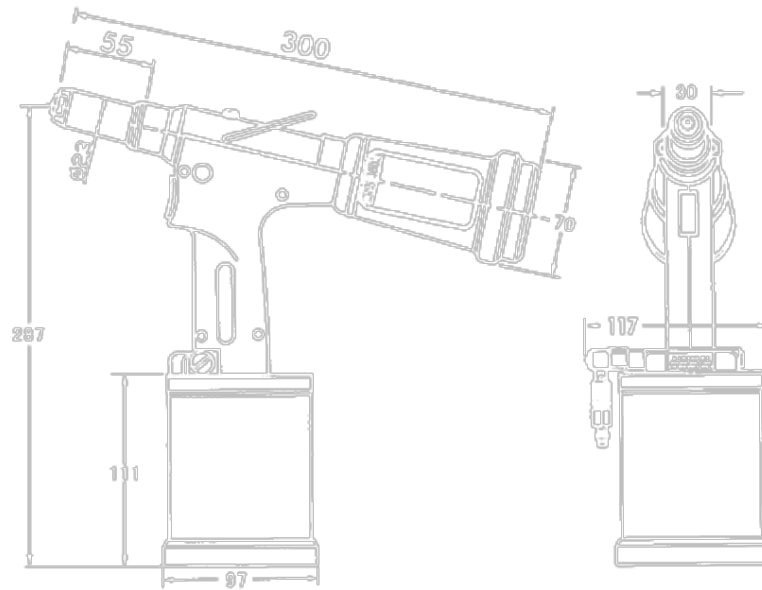
The following are not covered by warranty: standard accessories and tool damages caused by:

- transport and/or handling
- user's mistakes
- failed servicing/maintenance, as indicated in this manual
- faults and/or breakages that are not attributable to tool anomalies
- normal consumption of consumables.

The warranty is invalidated both in case of unauthorised tampering/replacements of tool components and in case of use of accessories, tools or consumables different to those recommended by the manufacturer, which could even cause injuries to the tool's user.

Rivit S.r.l. assumes responsibilities only if the tool is originally defective, but declines all forms of responsibility if the user fails to follow the given instructions.

TECHNICAL DATA




Air pressure	6 bar
Air consumption per stroke	4,35 litri
Stroke	20 mm
Force	10.900 N
Weight	1,546 Kg
Vibration	< 2,5 m/s <sup>2</sup>
Noise level	78 dB (A)



In case of assistance please specify the serial number on the external case

**ACCESSORIES SUPPLIED**

PHOTO	CODE	QUANTITY	ACCESSORIES SUPPLIED
	41990	1	Nosepiece Ø 2,4
	41991	1	Nosepiece Ø 3,2
	41992	1	Nosepiece Ø 4,0
	41691	1	Nosepiece Ø 4.8 (on head)
	40417	1	Nosepiece Ø 6,0 for aluminium
	25248	1	Nosepiece Ø 4,8 3/16 for Monriv rivet
	12501	2	Jaws (3 pcs)
	41392	1	Jaws opener
	41340	1	Jaws return spring
	41338	1	Cone holding jaws
	-	1	Oil syringe
	-	1	Oil
	-	1	Hexagonal allen wrench 3 mm
	-	1	10-12 mm wrench
	-	2	16-17 mm wrench

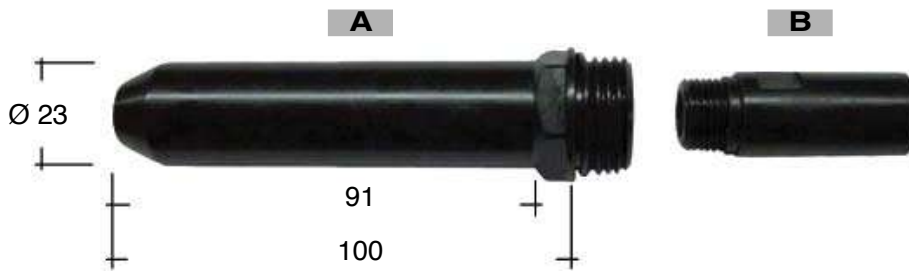
The tools is prepared for Ø 4.8 blind rivet.



Open valve  
Close valve

**ACCESSORIES ON REQUEST**

Kit 503 - Extension 100 and 200 mm.



REF.	CODE	QUANTITY	DESCRIPTION
A+B	42043	1	Kit 503 - Extension 100 mm
A	42024	1	Extended sleeve 100 mm
B	41993	1	Adaptor x internal extension x 100 mm

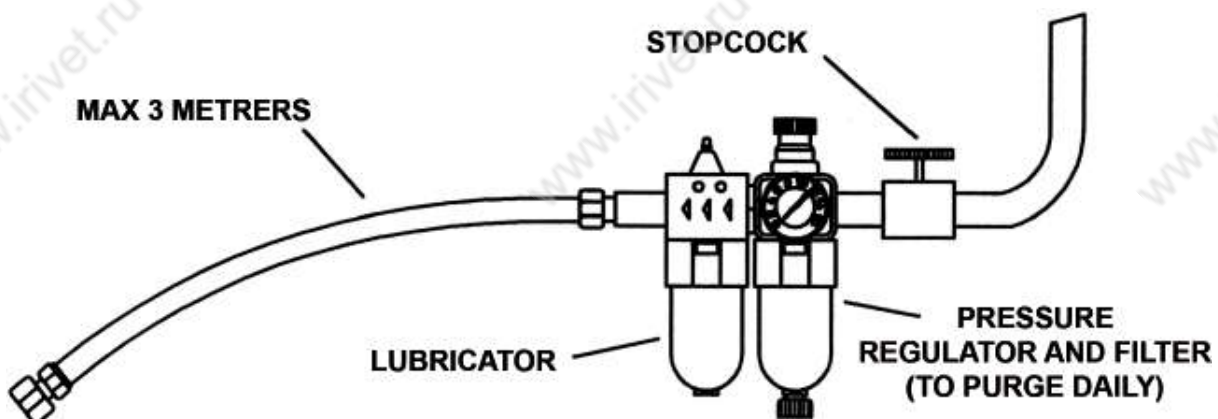


REF.	CODE	QUANTITY	DESCRIPTION
A+B	42268	1	Kit 503 - Extension 200 mm
A	42267	1	Extended sleeve 200 mm
B	42265	1	Adaptor x internal extension x 200 mm

To get the 100 mm and the 200 mm extensions you need to disassemble the parts and assemble the new correspondent ones (A and B) in the same sequence.

## SAFETY MEASURES

- Use the riveting tool properly and for the purposes for which it has been manufactured.
- Any kind of modification made on the riveting tool and its equipment by the customer itself, will be done under the fully responsibility of the customer. In this case, Rivit srl declines any responsibility.
- The riveting tool must be always kept in safety conditions and must be revised at regular intervals by expert and authorized workers, following the maintenance producers of Rivit srl.
- The riveting tool will always be used following the EC normative "on health and safety measures on job" (Directive 2006/42/EC). Any problem or information regarding the correct operating of the tool, will have to be returned to Rivit srl.
- The safety measures to be observed during the use of the riveting tool, must be explained from the customer to all users. Always detach the air feeding from the take-off point of the tool before regulating, repairing and cleaning operations.
- Don't use the tool if it is turned towards other persons.
- Operating pressure have not to exceed 7 bar - 100 LBF/IN<sup>2</sup>.
- Make sure that the air discharges are not blocked or covered and the feeding hoses are always in good working conditions.
- The operations of maintenance, repairing and cleaning must be done when the tool is not fed.
- When using the riveting tool, wear protective glasses or visors and gloves.
- Use only original spare parts for repairing and maintenance. Rivit srl declines any responsibility for any kind of damages caused by not observing the above and following instructions (directive CEE 85/734).
- If the noise level is over the safety limit of 85 dB (A), use the proper hearing protections (antinoise headset etc.).



## OPERATING INSTRUCTIONS

### Air feed

All the tools works with compressed air, with a pressure of 6 bar.

We suggest to use regulators of pressure and automatic filtering systems on the main net of feeding air. These will have to stay to 3 meters of distance from the tool (see the drawing), in order to assure an optimal pressure in the tool and its maximum duration-life with a minimum maintenance.

The flexible tubes for the air compressed in entrance must be in a position to supporting a pressure of 10 bars and will have to be resistant to the oil, covered of a material resistant to the abrasions and protected in case bad job conditions could damage them.

All the flexible tubes for the compressed air must have a diameter of minimum passage of 6,4 mm or  $\frac{1}{4}$  of inch.

The pressure regulator must be set up to 6,5 bars in consideration of the pressure fall.

Knob for suction adjusting: to adjust the air suction rotate the knob



For instructions read label



The container must not be disassembled because it collects the mandrel

## SIZE CHANGING AND MAINTENANCE

### Size changing

For changing the size of nosepiece, use the 12 mm spanner (equipped).

### Maintenance

Check the grip of the jaws on the rivet's nail.

If it is anomalous, this is due to a problem on the jaws: dirty jaws or wear of the jaws.

In the first case, proceed with cleaning and oiling the jaws; in the second case, it is necessary to substitute the jaws with new ones.

In order to do these operations, first of all, disconnect the air feeding; then remove the head carrying nosepiece with a 25 mm spanner.

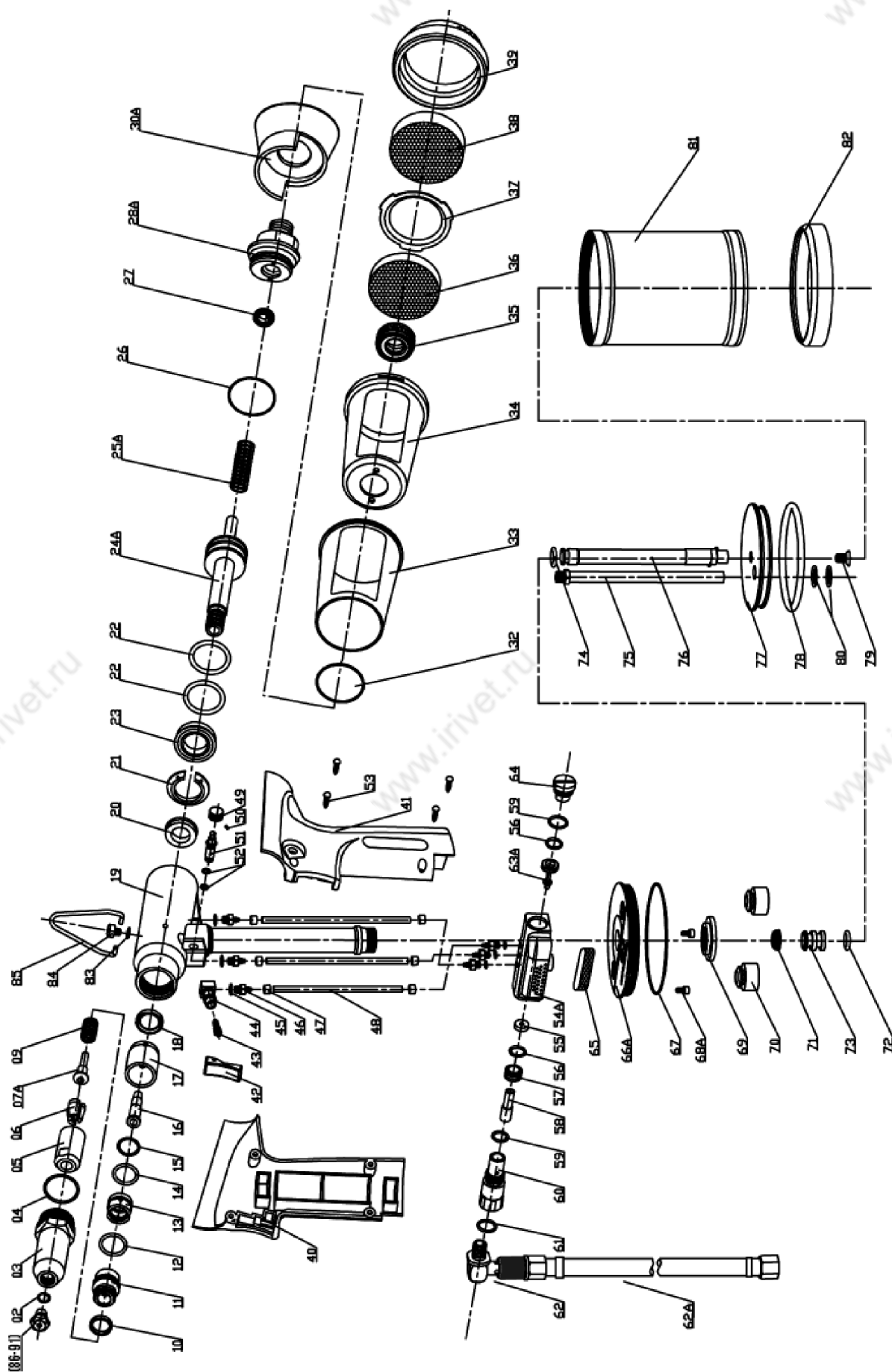
Then with 16 mm and 17 mm spanner keep off the cone holding jaws and proceed with cleaning or changing the jaws.

Check the air pressure, which don't have to exceed 7 bar.

Check eventual losses of oil or air.

Check the stroke of the riveting tool. If it is anomalous, proceed with topping up new oil.





REF.	CODE	QUANTITY	DESCRIPTION
2	41692	1	O-ring
3	41337	1 •	Nosepiece holder
4	41721	1	O-ring
5	41338	1 •	Cone holding jaws
6	12501	3 ••	Jaws
7A	41392	1 ••	Jaws opener
9	41340	1 ••	Jaws return spring
10	41722	1	O-ring
11	42455	1	Connector
12	41726	1	O-ring
13	43408	1	Connector
14	41727	1	O-ring
15	41728	1	O-ring
16	42397	1	Intake mandrel
17	43409	1	Spacer
18	41341	1	Gasket
19	43410	1	Head cylinder
20	41342	1	Gasket
21	41347	1	Anti-extrusion ring
22	41348	2	O-ring
23	41349	1	Gasket
24A	43411	1	Piston
25A	43983	1	Spring return piston
26	42250	1	O-ring
27	41350	1 ••	Gasket
28A	43984	1	Plug
30A	43985	1	Collector connection
32	42253	1	O-ring
33	41359	1	Nail collector lid
34	41360	1	Nail collector body
35	43378	1	Ring nut
36	41729	1	Silencer
37	41733	1	Collector lock
38	41730	1	Silencer
39	41734	1	Collector cap
40	41443	1	Right handle
41	41444	1	Left handle
42	41449	1 •	Trigger
43	43382	1	Button
44	43383	1	Valve
45	43384	6	O-ring
46	43385	6	Collector
47	43386	6	Hose stop
48	43387	3	Air hose
49	43171	1	Suction ring nut
50	43172	1	Nut
51	43415	1	Valve
52	43416	2	O-ring
53	41450	6	Tapping screw

• *Recommended spare parts*

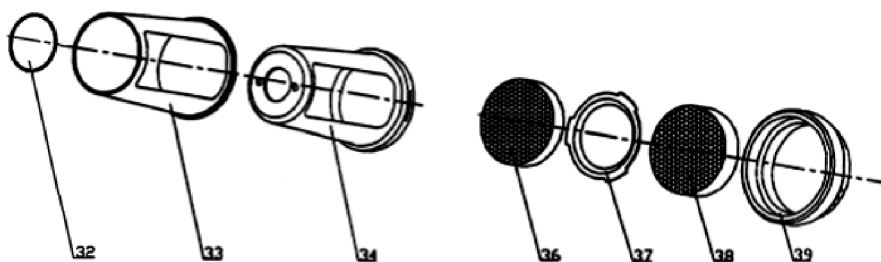
•• *Spare parts of highest consumption*

54A	43152	1	Air valve body
55	41376	1 ••	Air valve ring
56	41377	2 ••	O-ring for air valve piston
57	41378	1 •	Air valve base
58	43115	1	Connector
59	42254	2	O-ring
60	43389	1	Connector
61	42255	1	O-ring
62	42940	1 •	Rotating connector + air hose
62A	42258	1	Air hose
63A	41379	1 •	Air valve piston
64	43052	1	Cap
65	41731	1	Silencer
66A	43393	1	Cylinder bottom
67	41380	1	O-ring
68A	43400	2	Hexagonal socket head cap screw
69	43402	1	ring nut
70	41810	2	Shock absorber cap
71	41381	1	Gasket
72	41382	2	O-ring
73	43404	1	Piston
74	42257	1	Piston washer
75	43418	1	Hose
76	43444	1	Piston stem
77	43406	1	Piston plate
78	41385	1	O-ring
79	42654	1	Screw
80	42655	2	O-ring
81	43425	1	Cylinder
82	43173	1	Protection bottom
83	42396	1	Gasket
84	43174	1	Screw
85	43175	1	Hook balancer
86	41990	1	Nosepiece Ø 2,4
87	41991	1	Nosepiece Ø 3,0 - 3,2
88	41992	1	Nosepiece Ø 4,0
89	40417	1	Nosepiece Ø 6,0
90	41691	1	Nosepiece Ø 4,8
91	25248	1	Nosepiece Ø 4,8 3/16 for Monriv rivets

• **Recommended spare parts**

•• **Spare parts of highest consumption**

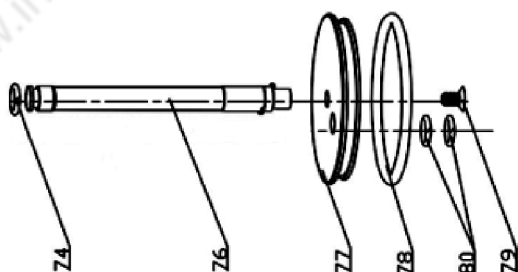
**Kit 503 - Kit nail collector**



REF.	CODE	QUANTITY	DESCRIPTION
-	42042	1 •	Nail collector kit
32	42253	1	O-ring
33	41359	1	Nail collector lid
34	41360	1	Nail collector body
36	41729	1	Silencer
37	41733	1	Collector lock
38	41730	1	Silencer
39	41734	1	Collector cap

• **Recommended spare parts**

**Kit 503 - Kit pneumatic piston**



REF.	CODE	QUANTITY	DESCRIPTION
-	43424	1 •	Pneumatic piston kit
74	42257	1	Piston washer
76	43444	1	Piston stem
77	43406	1	Piston plate
78	41385	1	O-ring
79	42654	1	Screw
80	42655	2	O-ring

• **Recommended spare parts**