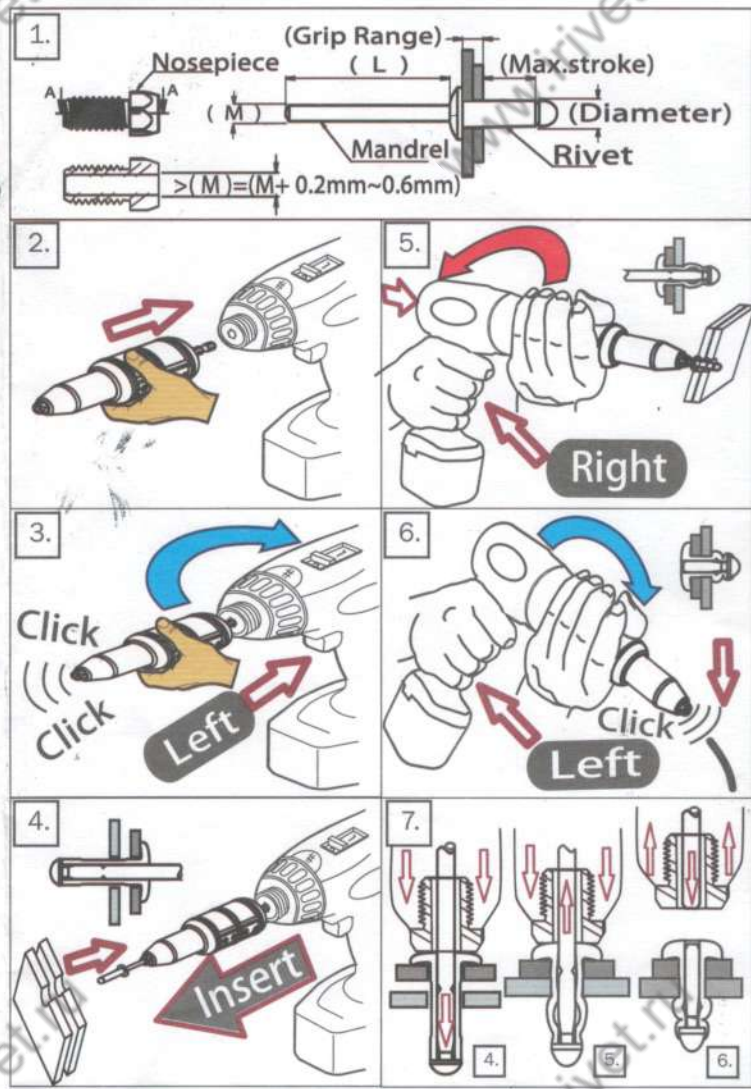


- 1. -Nosepiece
- 2. -Head accessory
- 3. -Heavy duty rivet attachment
- 4. -Rubber grip
- 5. -1/4" hex drive shaft
- 6. -Chuck or 1/4" hex socket

Operating Instructions

1. Set the work piece well and drill a hole. The diameter of the hole should be more 0.2mm-0.4mm than the diameter of the blind rivet.
 2. Clean the oil stain on the rubber grip or wear gloves, to avoid the slippage while holding it tightly by hands.
 - 3.[Fig.1]Select the correct nosepiece for the blind rivets. (Note: Incorrect nosepiece may cause the rivet mandrel unable to expel smoothly, and damage the parts.
 - 4.[Fig.2]Insert the hex drive shaft of the rivet attachment into the chuck or 1/4" hex socket of the drive tool. (Note: This product is only applicable for the tools with reversible operation.)
 - 5.[Fig.3]Hold the rivet attachment by hand and drive the tool in left-hand rotation, until you hear a "click" sound from the nosepiece. (The inner collet is opened.)
 - 6.[Fig.4]Insert the blind rivet on the rivet attachment, and then overall forward and press the rivet attachment firmly to the hole of the workpiece. (Note: The mandrel can slide into the hole of nosepiece easily in right match.
- ※Warning: Pay attention on your hands. When you drive the big sized rivets, there would be with stronger actuation while rotation. Please hold tighter, or give up the operation if you are unable to hold it tightly.
- 7.[Fig.5]Hold the rivet attachment tightly. Start driving the tool in right-hand rotation. The mandrel is pulled by the jaws inside and shrunk. When it is pulled to the limit, the mandrel breaks and flush with the nozzle.Refer to[Fig.7] illustration.
 - 8.[Fig.6]Now, drive the tool in the left-hand rotation until the mandrel is expelled, and hear a click sound from the nozzle.
 9. Prepare the next riveting actuation. (Note: Before inserting a new blind rivet, ensure the broken mandrel has been expelled.



Troubleshooting

1. Firstly, rotate the hex drive shaft rightward few times to release the inner pressure, and then unscrew the retaining collar on the body to separate the head accessory.
2. Check the condition of the components. Ensure to remove the scraps inside (ex. iron scraps), and clean it.
- 3.[Fig.A]When the mandrel is deformed and jammed on the collet, use the tool to straighten the mandrel. (If without tool, invert and insert the head accessory, put the hole into the mandrel, and then straighten with force.) ※(Note: This way may damage the parts. Please operate carefully.)
- 4.[Fig.B]After checking the mandrel straightened, rotate the hex. drive shaft leftward. Take out the spindle assembly and place into the head accessory. Hold firmly and press the mandrel end to open the jaws. The mandrel slides and falls away from the nozzle. (May replace the nozzle with larger diameter to expel the mandrel easier).
- 5.[Fig.C]Disassemble the spindle set. Use a screwdriver through the side of round hole. Use the wrench to unscrew it and pull out the screwdriver. (Note: Do not disassemble it if not necessary to avoid parts damage.)

