

indicates the initial position with the hole control 4 closed to be prepared for the next blind rivet. Before inserting a new blind rivet make sure that the previous mandrel has been expelled.

**MAINTENANCE AND CLEANING.**

**Figure F.** The jaws must be cleaned and lubricated from time to time and remove the dusty material that could be deposit. For spar parts requirement you may use the piece number of the Figure F. And the references of the spare parts in <http://www.rivedrill.com/operating-instructions/spare-parts/>. RiveDrill is always disassembled the shaft portion releasing the spring washer as shown in photographs in <http://www.rivedrill.com/operating-instructions/>

**Change the nosepieces.**

**Figura G**

1° Open the hole control operating the motor to the right.  
2° Change the nosepiece and close the hole control operating to the left.  
**IMPORTANT.** Never remove the nosepiece with the hole control close, because the pressure of the jaws makes it very difficult to place the new nosepiece. Rivedrill doesnotwork without nosepiece.

**BREAKDOWN, CAUSES AND SOLUTIONS**

☒ If the rivet doesn't enter. Possible solution, the nosepieces 14, 15 or 16, Figure F is not chose correctly. Change the nosepiece. Possible mandrel of the blind rivet inside of RiveDrill. Before to be continued, dismount RiveDrill and expel the mandrel. Possible jaw 5, figure F with defect. Disassemble and change it.

☒ The blind rivet is in but it doesn't work. Possible mechanism in position as figure B3. Act to work as position B2. Possible that the mandrel of the blind rivet is too short. Check the sizes as C4. Possible that the jaws are wearing or break. Clean or change it. <http://www.rivedrill.com/operating-instructions/spare-parts/>

☒ RiveDrill set the rivet but does not expel the mandrel. Possible solution, the nosepieces 14, 15 or 16, Figure F is not chose correctly. Change the nosepiece. Possible that the jaws are wearing or break. Clean or change it. Possible than the mandrel is to thick. Check the rivet sizes C4.

**GUARANTEE.**

RiveDrill has a warranty against defects in material and workmanship. Attach the invoice or delivery note. If defective, replace or repair the unit, as deemed appropriate. Not covered by warranty for damage caused by natural wear, overloading or improper use. Claims can only be processed in an establishment providing RiveDrill authorized service.

**DECLARATION OF CONFORMITY.**

Declaration of the manufacture according to 93/37/EC. This product has been designed exclusively for being built into another machine, or mounted onto another machine or other machines. It is forbidden to put this

product into operation before the conformity of the final product with the provisions of the regulation 98/37/EC has been fulfilled. The conformity is fulfilled, for example, if this accessory is driven by a MAQUINAS ANDREA power tool according to the operating instructions or the pictogram instructions on the packing.

CE 14 MAQUINASANDREA, S.L.

This book instruction is printed in Madrid (Spain) and all the property rights about texts, draws and pictures are owned of MAQUINAS ANDREA, S.L. Modifications can be produced with rights reservations to MAQUINAS ANDREA, S.L. It is forbidden the partial or total copy.

MAQUINAS ANDREA, S.L. Islas cías, 61  
28035 Madrid España.

Tf. + 34 693215339 Fax +34 913 526 577  
nuria@rivedrill.com

Tutorial video. Operating instructions. Spare parts and more information: [www.rivedrill.com](http://www.rivedrill.com)

[www.rivedrill.net](http://www.rivedrill.net)  
[www.rivedrill.es](http://www.rivedrill.es)

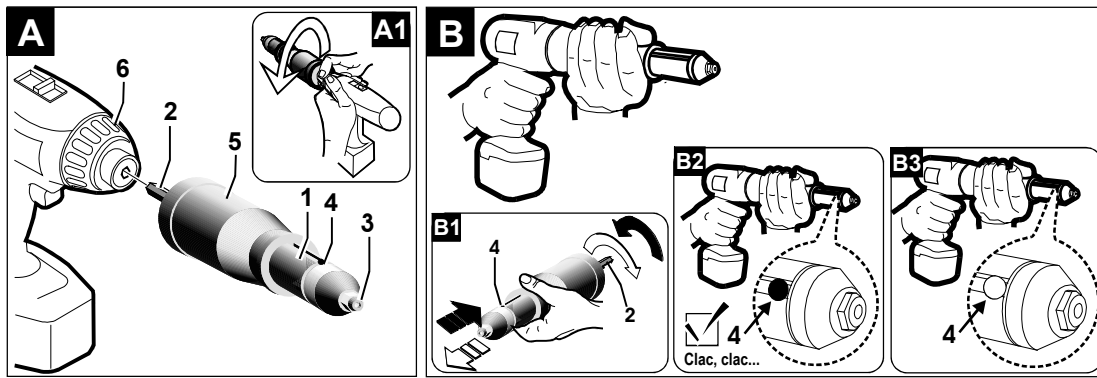
# RiveDrill

## Riveter for drilling machine User manual

Tools specifications for diferent models of RiveDrill riveter.



Model		RiveDrill HP	RiveDrill E28	RiveDrill E20	RiveDrill E95H	RiveDrill E10	RiveDrill R98
Recommended use		Professional	Professional	Professional	Bricolage D.I.Y.	Bricolage D.I.Y.	Bricolage D.I.Y.
	Maximum stroke (Z)	30 mm 1.18 in	28 mm 1.10 in	20 mm 0.79 in	10 mm 0.39 in	10 mm 0.39 in	10 mm 0.39 in
	Maximum Strength (F)	1000 Kgs 10.000 Nw	800 Kgs 8.000 Nw	650 Kgs 6.500 Nw	500 Kgs 5.000 Nw	300 Kgs 3.000 Nw	200 Kgs 2.000 Nw
	Union thickness(X)	All	All	All	All	All	All
	Rivet Diameter (D)	2,4mm-3/32in 3,2mm-1/8 in 4,0mm-5/32 in 4,8mm-3/16 in 6,4 mm-1/4 in	2,4mm-3/32in 3,2mm-1/8 in 4,0mm-5/32 in 4,8mm-3/16 in	2,4mm-3/32in 3,2mm-1/8 in 4,0mm-5/32 in 4,8mm-3/16 in	2,4mm-3/32in 3,2mm-1/8 in 4,0mm-5/32 in 4,8mm-3/16 in	2,4mm-3/32in 3,2mm-1/8 in 4,0mm-5/32 in 4,8mm-3/16 in	2,4mm-3/32in 3,2mm-1/8 in 4,0mm-5/32 in 4,8mm-3/16 in
Telescopic body for the hand		No	Yes	Yes	Yes	No	No
Body Material		Steel - rubber	Steel and Polyamide - glass fiber	Steel and Polyamide - glass fiber	Polyamide - glass fiber	Polyamide - glass fiber	Plastic
Nosepieces included		4	4	4	3	3	1
Net weight (grams)		582	360	356	293	230	189
Gross weight (grams) (box and nosepieces included)		700	477	473	410	270	229



GB

**FOR YOUR SAFETY.**

Working safely with this machine is possible only when the operating and safety information are read completely and the instructions contained there in are strictly followed.

Attention with the reaction of the hand that hold the RiveDrill. Release RiveDrill if the reaction is strong.

In order to ensure that the machine functions safely, only use the blind rivets listed in the specifications together with the correctly matching nosepiece (nozzle) permitted with each model of the table of the first page.

High forces can occur during the working procedure, use grooves in the hand that the RiveDrill is hold, and therefore hold RiveDrill tool firmly. Do not use bracelets or other objects that can be hooked.

More information and tutorials videos in [www.rivedrill.com](http://www.rivedrill.com)

**TOOLS SPECIFICATION.**

See in the Specifications of table of first page corresponding to your RiveDrill model you have. Special importance have the specifications in: Maximum stroke (Z) in charge riveting, and the maximum Strength (F) of riveting. The safety sizes for blind rivets must be observed in the graphic Figure C1, about diameter and material of blind rivets aluminum, steel or stainless steel.

**USE AS INTENDED**

RiveDrill is a device that has been designed to be attached to a reversible drilling machine, reversible, cordless drill (12 vol. or more), to set blind rivets.

- The rivet is fixed in a single action.
- The mandrel of the rivet should be inserted completely in the RiveDrill.

- Before insert the next rivet in the RiveDrill be sure to expel the mandrel before.

- For damage caused by usage other than intended, the user is responsible. More information in [www.rivedrill.com](http://www.rivedrill.com).

**OPERATING CONTROLS**

**Figure A. Elements of the machine.** The accessories described in the book instructions, are not always included in the given unit. Some elements are to get optional: (1) RiveDrill, (2) Drive Shank, (3) Nosepiece; (4) Hole control, (5) Telescopic body for the hand; (6) Drilling machine (7 fig. C) Rivet

**INITIAL OPERATION.**

**Figure A. Installing RiveDrill.** Insert the drive shank 2 into the chuck of the drill and tight strongly, Figure A1. Cover the chuck of drill with the telescopic body for the hand of RiveDrill, 5

**Figure B. Working procedure.** RiveDrill is hold with the hand by the telescopic body 5 to not turn; figure B. RiveDrill transform the rotatory movement, that is coming by the drive shank 2 Figure B1, from the drill, in a lineal movement that open or close the hole control 4, figure B1. When the drill turns to the right or to the left, the inside mechanism of RiveDrill advances toward, setting the rivet or backward expelling the mandrel respectively. Looking at the figure. B1 the black arrows are showing to open the hole 4, the white arrow is showing to close the hole 4. In the end and beginning, in both ways, is listened the sound clack, clack.

**Try the movement without rivet.**

- Turning to the right, figure B2. Looking at how the hole control 4 is closed and listen the clack, clack,

- Turning to the left, figure B3. Looking at how the hole control 4 is opened and you hear the clack, clack.

Tutorial Use and way of working in <http://www.rivedrill.com/tutorial-videos/esp%C3%B1ol-video-tutorial-rivedrill-e95h/>.

**Initial position to start to set a rivet.Changing nosepiece (Fig. G)** The hole control 4 must be closed, like in the figure. B2. If the hole 4 is open, like in the figure B3, close the hole 4 turning on to the left the drill until hearing clack, clack....

**USE**

**Figure C. Insert the blind rive .** Insert the blind rivet 7, figure C, completely into the RiveDrill, with the Drill stopped. **Caution.** Don't use blind rivets with different sizes and materials that are indicated in figure. C1. Choose one of the nosepiece supplied (standard delivery) to fit the diameter of the blind rivet to be applied Fig. G. If the RiveDrill is used with a nosepiece inadequate it may cause that it works deficiently. Check the blind rivet that the measures of the mandrels of the blind rivet are between the minimum and the maximum of the chart of measures of the figure C4.

Check the blind rivet that the hardness of the material of the blind rivets are inside of the capacity of the RiveDrill

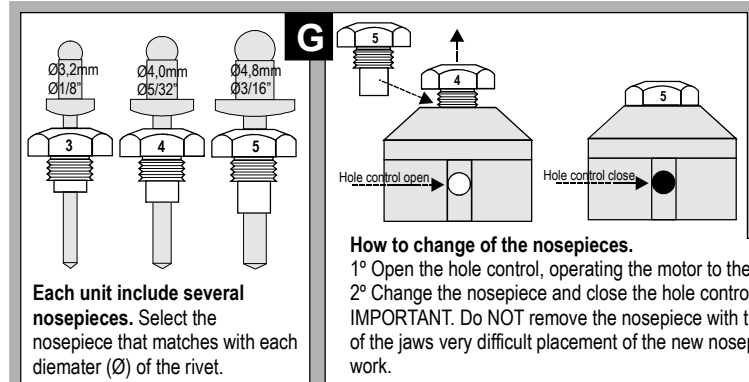
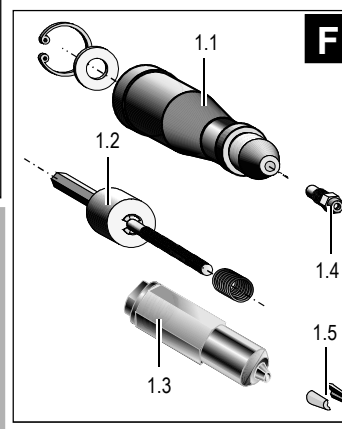
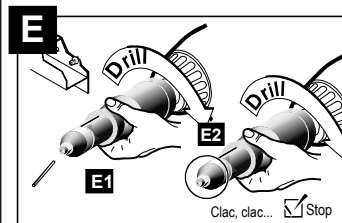
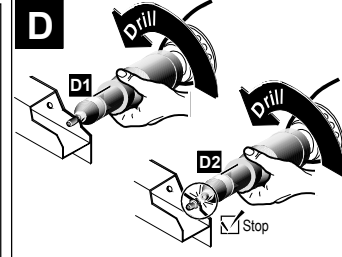
Riveting length (Z) should never be higher than indicated on the characteristics of each model on the first page. May riveting any material thickness to be bonded using the appropriate rivet length. If length (Z) recommended in the table of characteristics of the first page exceeds the rivet is defective and RiveDrill may be damaged.

**FigureD. Rivetting.** Prepare the drill to turn to the right. Introduce the head of the blind rivet completely in the hole of the parts have to be joined, figure D1. While the drill is started to the right, Rivedrill must hold strongly with the hand on the telescopic body 5, figure D2. Stop the drill when the rivet has been fixed and the mandrel of the blind rivet has been broken. **Caution** The reaction in the hand that hold the RiveDrill can be increased depending on the material and the size of the blind rivets is been used.

**Figure E. Expel the mandrel of the RiveDrill.** Turning to the left and incline the RiveDrill to left the mandrel of the rivet falls while the RiveDrill is hold with the hand so that do not turn. Keep the drills turning to the left until the clack, clack, is listened that

Blind Rivet			RiveDrill					
Blind Rivet Diameter mm (in)	Mandrel Material	Break Mandrel Diameter mm (in)	HP	E28	E20	E95H	E10	R98
6,4mm 1/4in	Stainless Steel	3,85-3,6mm (0,151in)	■					
	Steel							
	Aluminium							
4,8mm 3/16in	Stainless Steel	3,1-2,65mm (0,114in)		■				
	Steel							
	Aluminium							
4,0mm 5/32in	Stainless Steel	2,4-2,2mm (0,095in)			■			
	Steel							
	Aluminium							
3,2mm 1/8in	Stainless Steel	2,1-1,8mm (0,076in)				■		
	Steel							
	Aluminium							
2,4mm 3/32in	Stainless Steel	1,5-1,45mm (0,057in)					■	
	Steel							
	Aluminium							
Working stroke Z maximum mm (in)			30mm (1,18in)	28mm (1,10in)	20mm (0,79in)	10mm (0,39in)	10mm (0,39in)	10mm (0,39in)

■ With effort



**Each unit include several nosepieces.** Select the nosepiece that matches with each diameter (Ø) of the rivet.