

**Birdie®**



A member of **SFS**

**GESIPA®**

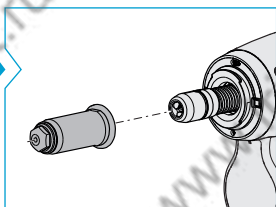


**[www.gesipa.com](http://www.gesipa.com)**





<b>DE</b>	<b>Deutsch</b>	Sicherheit / Technische Daten / Verwendung / Service	<b>15</b>
<b>EN</b>	<b>English</b>	Safety / Technical data / Use / Service	<b>23</b>
<b>FR</b>	<b>Français</b>	Sécurité / Caractéristiques techniques / Utilisation / Entretien	<b>31</b>
<b>ES</b>	<b>Español</b>	Seguridad / Datos técnicos / Uso / Servicio	<b>39</b>
<b>IT</b>	<b>Italiano</b>	Sicurezza / Dati tecnici / Utilizzo / Assistenza	<b>47</b>
<b>NL</b>	<b>Nederlands</b>	Veiligheid/Technische gegevens/Gebruik/Service	<b>55</b>
<b>DA</b>	<b>Dansk</b>	Sikkerhed / Tekniske data / Anvendelse / Service	<b>63</b>
<b>SV</b>	<b>Svenska</b>	Säkerhet / Tekniska data / Användning / Service	<b>71</b>
<b>FI</b>	<b>Suomi</b>	Turvallisuus / Tekniset tiedot / Käyttö / Huolto	<b>79</b>
<b>NO</b>	<b>Norsk</b>	Sikkerhet / tekniske data / bruk / service	<b>87</b>
<b>PT</b>	<b>Português</b>	Segurança / Dados técnicos / Utilização / Assistência técnica	<b>95</b>
<b>CS</b>	<b>Čeština</b>	Bezpečnost / Technické údaje / Použití / Servis	<b>103</b>
<b>EL</b>	<b>Ελληνικά</b>	Ασφάλεια / Τεχνικά στοιχεία / Χρήση / Υπηρεσία	<b>111</b>
<b>HU</b>	<b>Magyar</b>	Biztonság / Műszaki adatok / Használat / Szerviz	<b>119</b>
<b>PL</b>	<b>Polski</b>	Bezpieczeństwo / Dane techniczne / Użytkowanie / Servis	<b>127</b>
<b>ZH</b>	<b>中文</b>	安全/技术参数/使用/服务	<b>135</b>
<b>RU</b>	<b>Русский</b>	Безопасность / Технические данные / Использование / Сервис	<b>143</b>
<b>TR</b>	<b>Türkçe</b>	Güvenlik / Teknik veriler / Kullanım / Servis	<b>151</b>



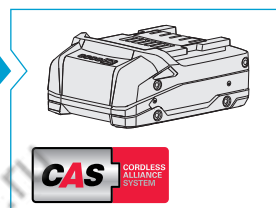
9

17/24

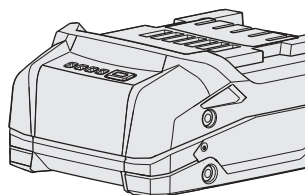
17/27

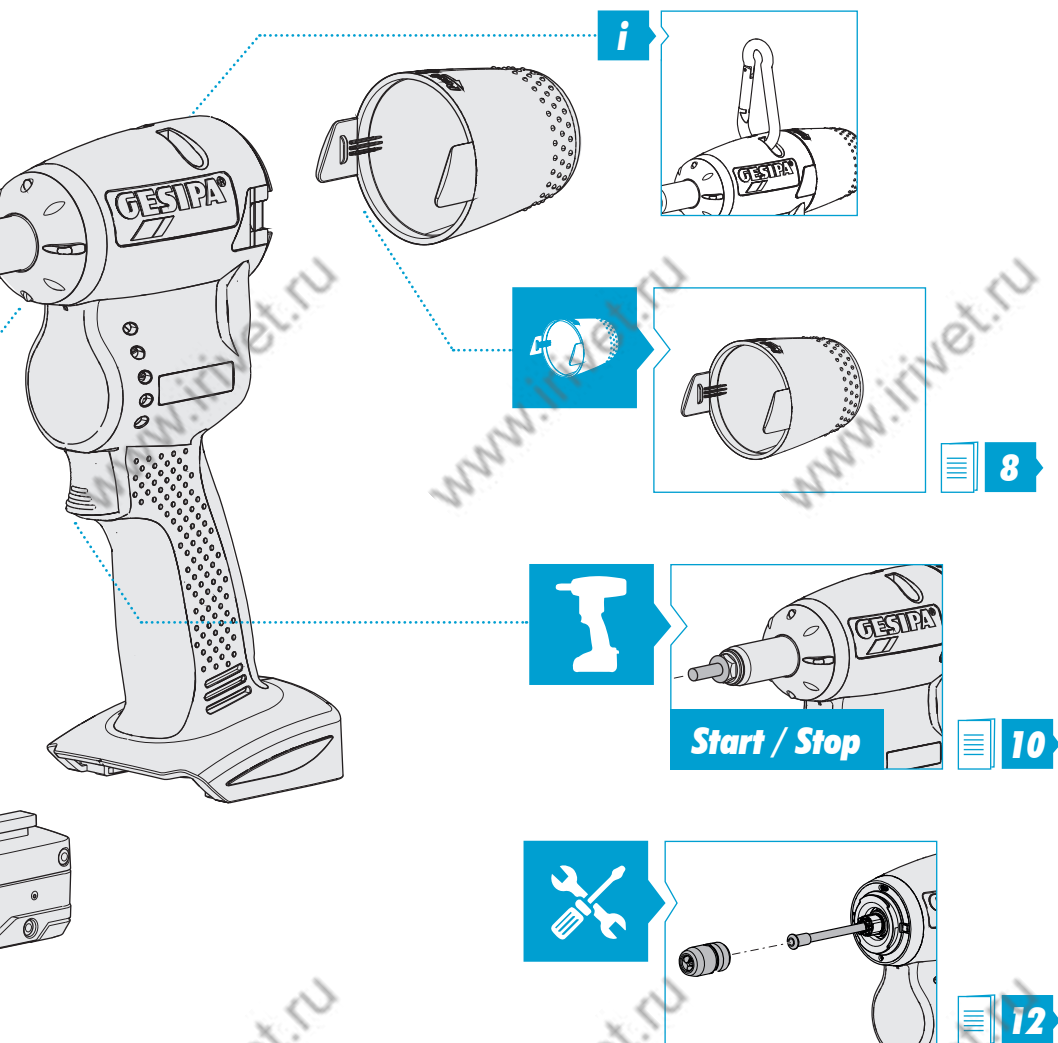
17/29

17/32



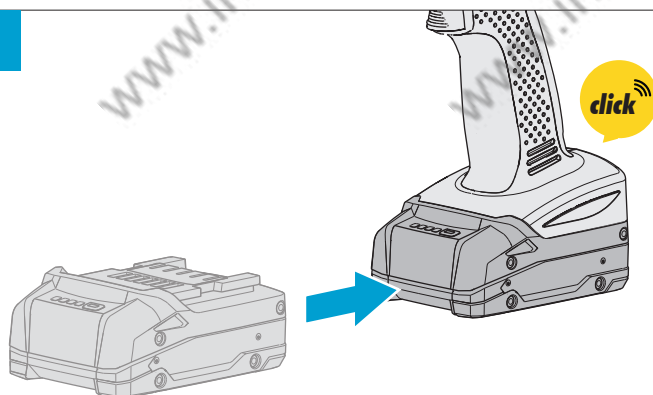
6



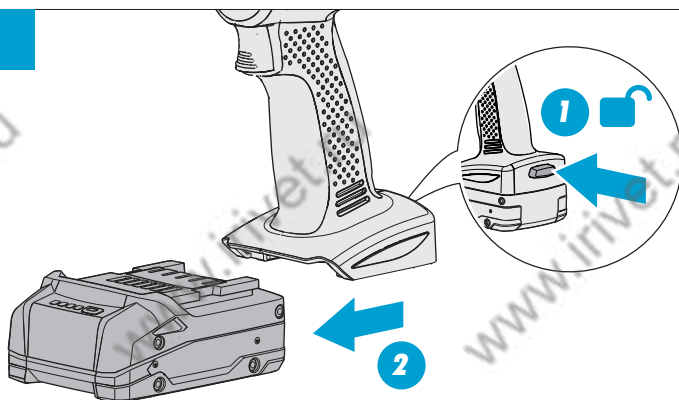


18V

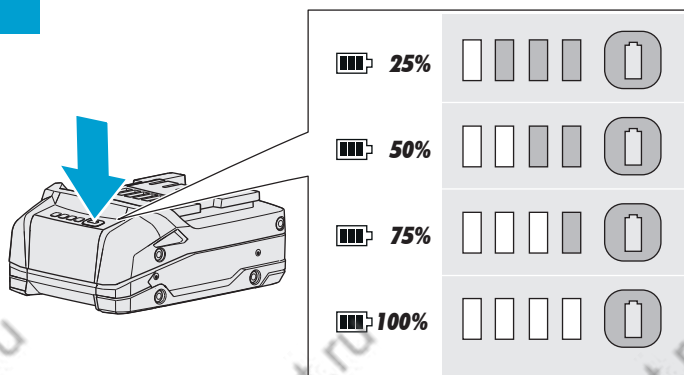
1



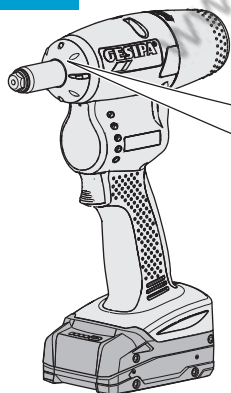
2



i



**i**



**3 x**



**10 s**



**20%**

**6 x**



**10 s**



**10%**

**9 x**



**10 s**

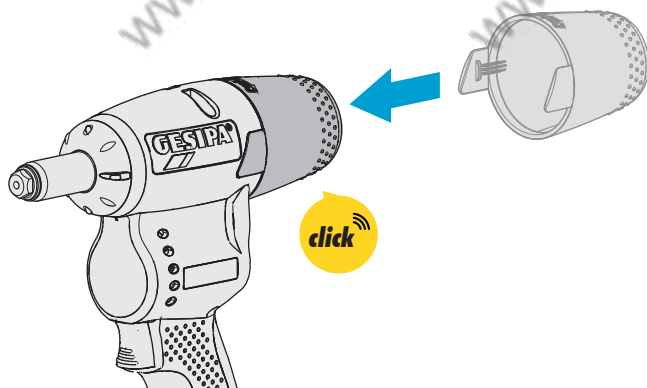


**0%**

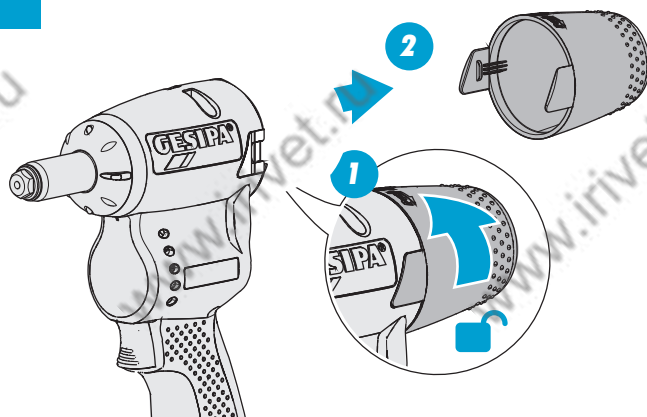




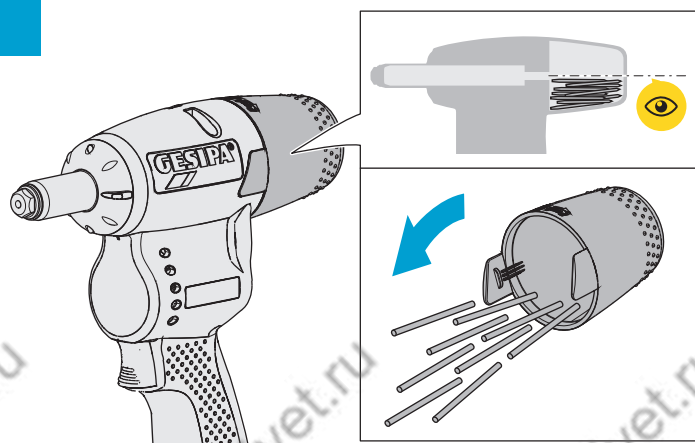
1

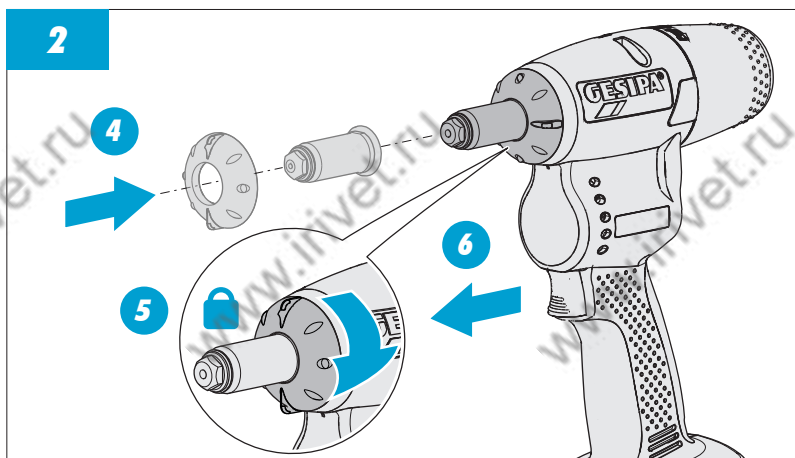
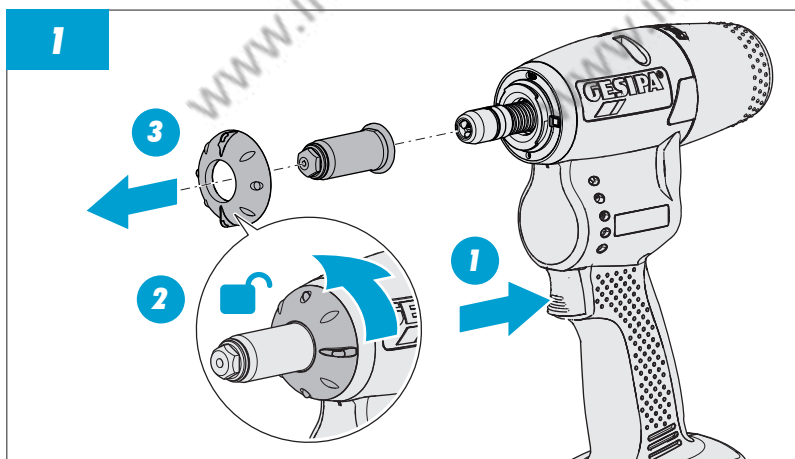




2



i



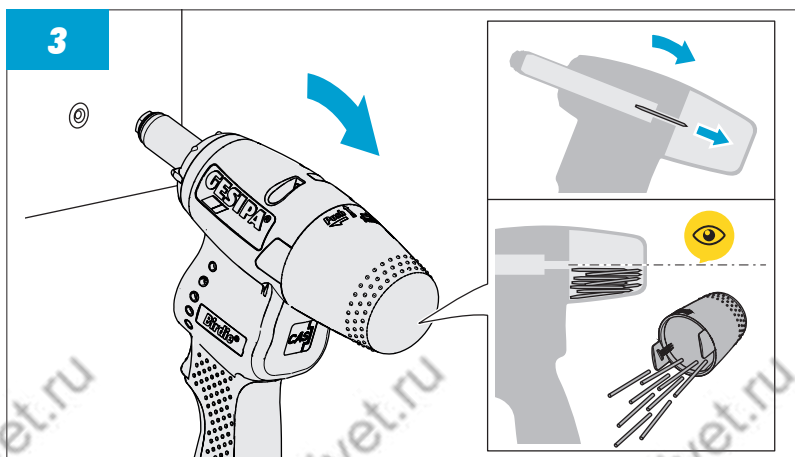
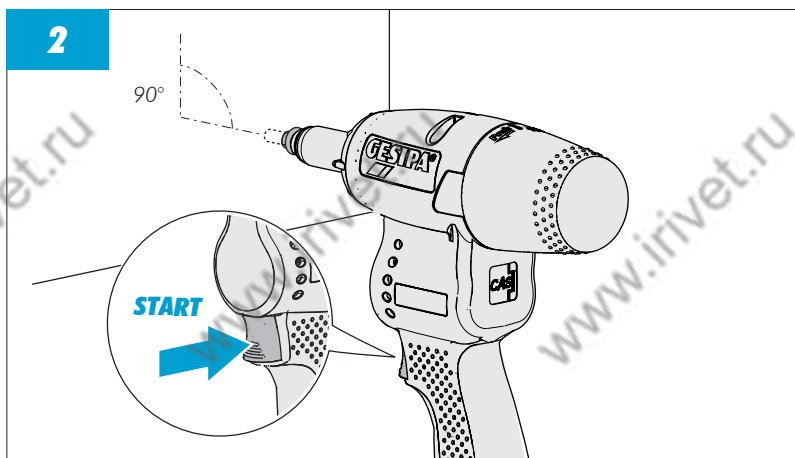
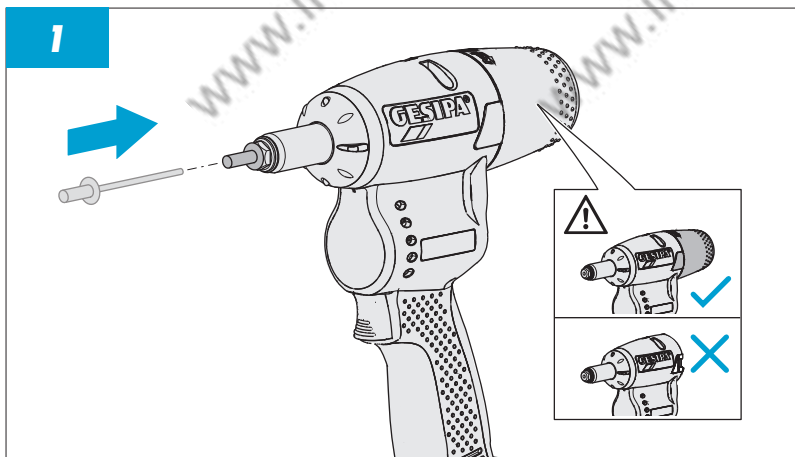


i		
Ø 3 / 3,2 mm	AL Steel A2 A4	17/24
Ø 4 mm	AL	17/24
	Steel	17/27
	A2 A4	17/29
Ø 4,8 / 5 mm	AL	17/29
	Steel	17/32

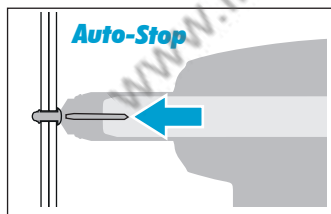
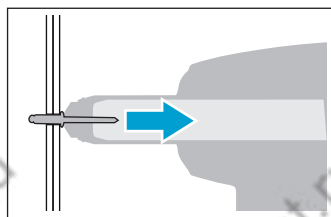
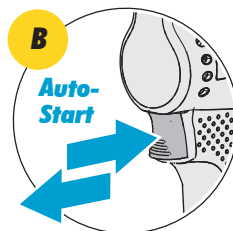
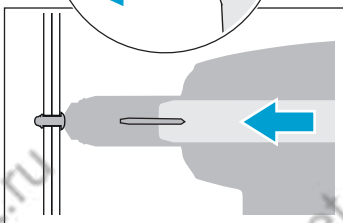
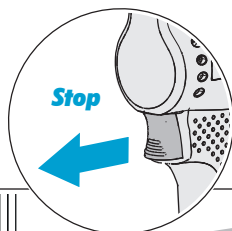
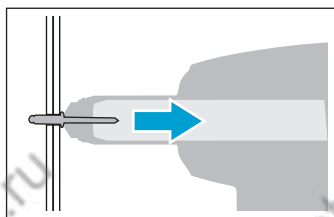
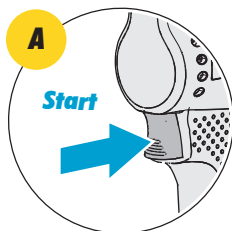


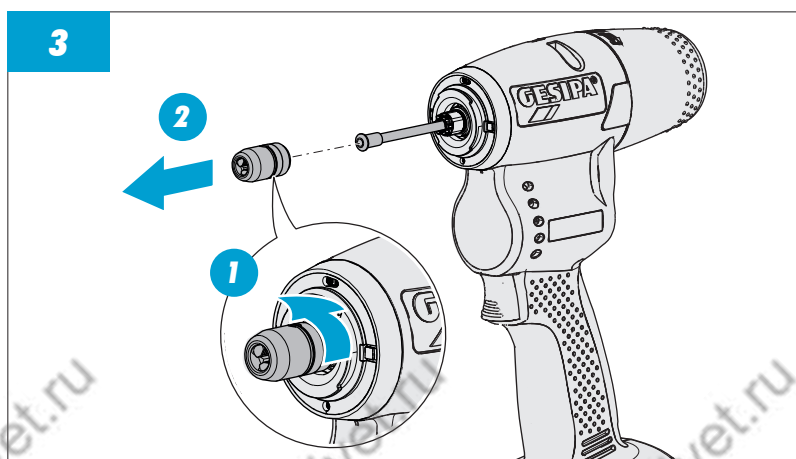
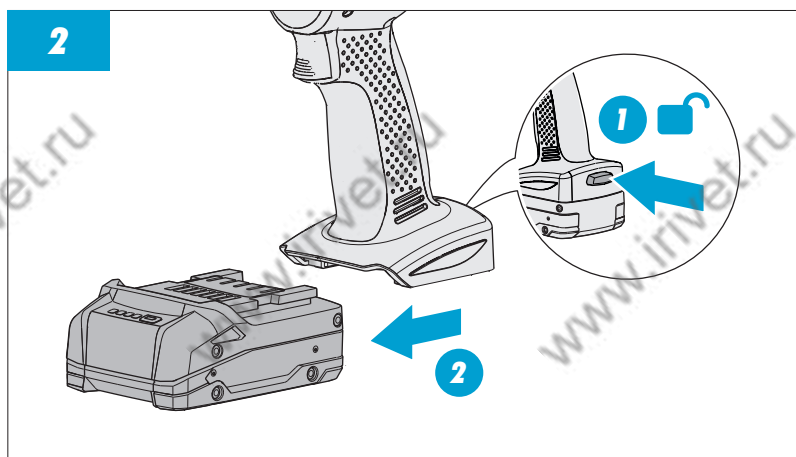
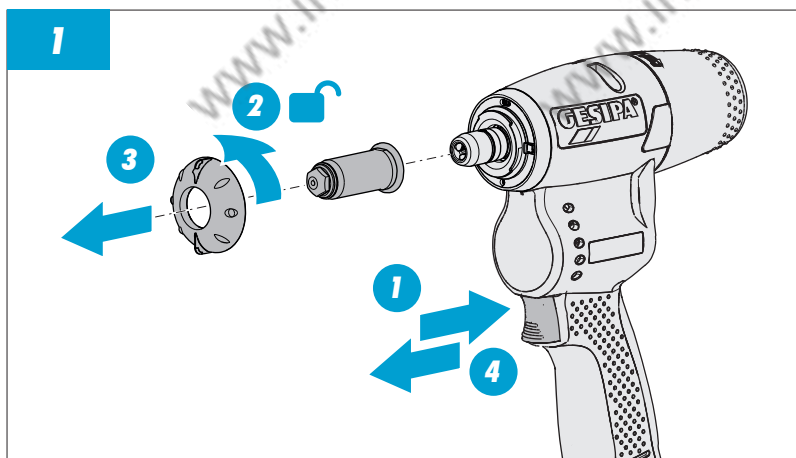
Ø 2,4 - 6 mm  
www.gesipa.com



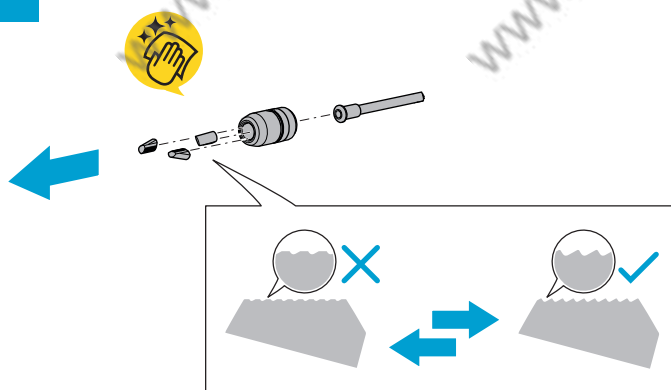


**i**

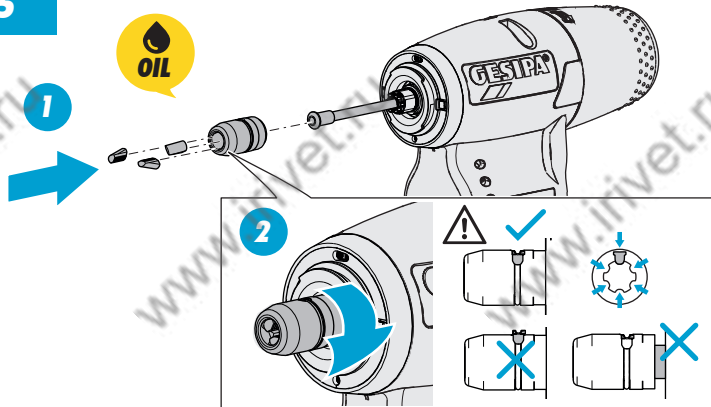




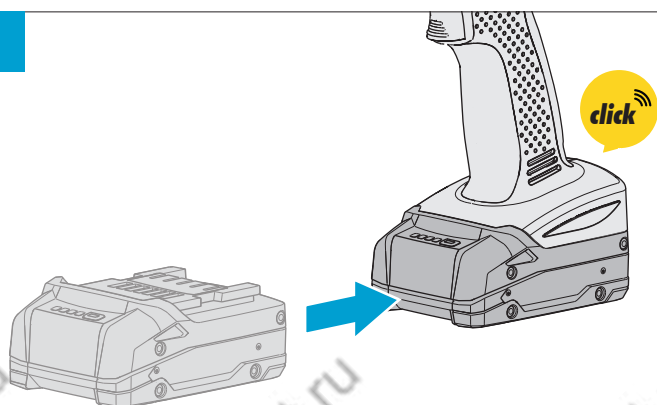
4



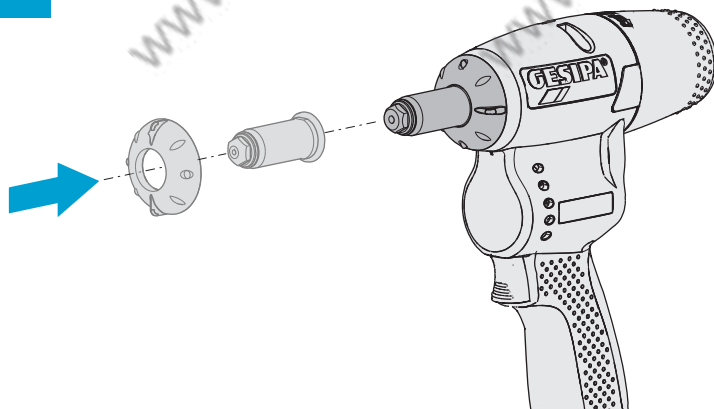
5



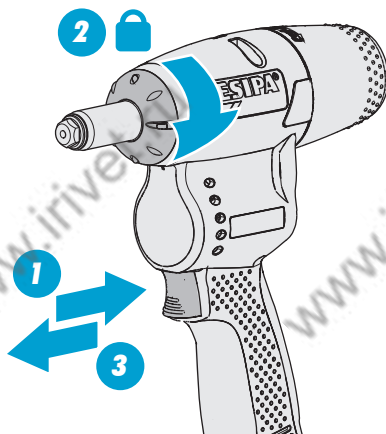
6



7



8



# Translation of the original operating instructions

## Safety instructions

### General Power Tool Safety Warnings

**⚠ WARNING** Read all safety warnings, instructions, illustrations and specifications provided with this power tool. Failure to follow all instructions listed below may result in electric shock, fire and/or serious injury.

**Save all warnings and instructions for future reference.**

The term "power tool" in the warnings refers to your mains-operated (corded) power tool or battery-operated (cordless) power tool.

#### 1) Work area safety

- a) **Keep work area clean and well lit.** Cluttered or dark areas invite accidents.
- b) **Do not operate power tools in explosive atmospheres, such as in the presence of flammable liquids, gases or dust.** Power tools create sparks which may ignite the dust or fumes.
- c) **Keep children and bystanders away while operating a power tool.** Distractions can cause you to lose control.

#### 2) Electrical safety

- a) **Power tool plugs must match the outlet. Never modify the plug in any way. Do not use any adapter plugs with earthed (grounded) power tools.** Unmodified plugs and matching outlets will reduce risk of electric shock.
- b) **Avoid body contact with earthed or grounded surfaces, such as pipes, radiators, ranges and refrigerators.** There is an increased risk of electric shock if your body is earthed or grounded.
- c) **Do not expose power tools to rain or wet conditions.** Water entering a power tool will increase the risk of electric shock.
- d) **Do not abuse the cord. Never use the cord for carrying, pulling or unplugging the power tool. Keep cord away from heat, oil, sharp edges or moving parts.** Damaged or entangled cords increase the risk of electric shock.
- e) **When operating a power tool outdoors, use an extension cord suitable for outdoor use.** Use of a cord suitable for outdoor use reduces the risk of electric shock.

- f) **If operating a power tool in a damp location is unavoidable, use a residual current device (RCD) protected supply.** Use of an RCD reduces the risk of electric shock.
- 3) **Personal safety**
  - a) **Stay alert, watch what you are doing and use common sense when operating a power tool. Do not use a power tool while you are tired or under the influence of drugs, alcohol or medication.** A moment of inattention while operating power tools may result in serious personal injury.
  - b) **Use personal protective equipment. Always wear eye protection.** Protective equipment such as a dust mask, non-skid safety shoes, hard hat or hearing protection used for appropriate conditions will reduce personal injuries.
  - c) **Prevent unintentional starting. Ensure the switch is in the off-position before connecting to power source and/or battery pack, picking up or carrying the tool.** Carrying power tools with your finger on the switch or energising power tools that have the switch on invites accidents.
  - d) **Remove any adjusting key or wrench before turning the power tool on.** A wrench or a key left attached to a rotating part of the power tool may result in personal injury.
  - e) **Do not overreach. Keep proper footing and balance at all times.** This enables better control of the power tool in unexpected situations.
  - f) **Dress properly. Do not wear loose clothing or jewellery. Keep your hair and clothing away from moving parts.** Loose clothes, jewellery or long hair can be caught in moving parts.
  - g) **If devices are provided for the connection of dust extraction and collection facilities, ensure these are connected and properly used.** Use of dust collection can reduce dust-related hazards.
  - h) **Do not let familiarity gained from frequent use of tools allow you to become complacent and ignore tool**

EN

**safety principles.** A careless action can cause severe injury within a fraction of a second.

#### 4) Power tool use and care

- a) **Do not force the power tool. Use the correct power tool for your application.** The correct power tool will do the job better and safer at the rate for which it was designed.
- b) **Do not use the power tool if the switch does not turn it on and off.** Any power tool that cannot be controlled with the switch is dangerous and must be repaired.
- c) **Disconnect the plug from the power source and/or remove the battery pack, if detachable, from the power tool before making any adjustments, changing accessories, or storing power tools.** Such preventive safety measures reduce the risk of starting the power tool accidentally.
- d) **Store idle power tools out of the reach of children and do not allow persons unfamiliar with the power tool or these instructions to operate the power tool.** Power tools are dangerous in the hands of untrained users.
- e) **Maintain power tools and accessories. Check for misalignment or binding of moving parts, breakage of parts and any other condition that may affect the power tool's operation. If damaged, have the power tool repaired before use.** Many accidents are caused by poorly maintained power tools.
- f) **Keep cutting tools sharp and clean.** Properly maintained cutting tools with sharp cutting edges are less likely to bind and are easier to control.
- g) **Use the power tool, accessories and tool bits etc. in accordance with these instructions, taking into account the working conditions and the work to be performed.** Use of the power tool for operations different from those intended could result in a hazardous situation.
- h) **Keep handles and grasping surfaces dry, clean and free from oil and grease.** Slippery handles and grasping surfaces do not allow for safe handling

and control of the tool in unexpected situations.

#### 5) Battery tool use and care

- a) **Recharge only with the charger specified by the manufacturer.** A charger that is suitable for one type of battery pack may create a risk of fire when used with another battery pack.
- b) **Use power tools only with specifically designated battery packs.** Use of any other battery packs may create a risk of injury and fire.
- c) **When battery pack is not in use, keep it away from other metal objects, like paper clips, coins, keys, nails, screws or other small metal objects, that can make a connection from one terminal to another.** Shorting the battery terminals together may cause burns or a fire.
- d) **Under abusive conditions, liquid may be ejected from the battery; avoid contact. If contact accidentally occurs, flush with water. If liquid contacts eyes, additionally seek medical help.** Liquid ejected from the battery may cause irritation or burns.
- e) **Do not use a battery pack or tool that is damaged or modified.** Damaged or modified batteries may exhibit unpredictable behaviour resulting in fire, explosion or risk of injury.
- f) **Do not expose a battery pack or tool to fire or excessive temperature.** Exposure to fire or temperature above 130 °C may cause explosion.
- g) **Follow all charging instructions and do not charge the battery pack or tool outside the temperature range specified in the instructions.** Charging improperly or at temperatures outside the specified range may damage the battery and increase the risk of fire.

#### 6) Service

- a) **Have your power tool serviced by a qualified repair person using only identical replacement parts.** This will ensure that the safety of the power tool is maintained.
- b) **Never service damaged battery packs.** Service of battery packs should only be performed by the manufacturer or authorized service providers.

## **Safety instructions for rivet tools**

**Caution: The rivet tool is not suitable for use in an ATEX zone.**

- The rivet tool is intended solely for the purpose of setting blind rivets or blind rivet nuts and blind rivet studs.
- Do not direct the rivet tool at yourself or other persons during use.
- Do not use the rivet tool without material.
- Do not use the rivet tool without a mandrel container.
- Do not overload the rivet tool; work within the specified performance range.
- Never use or store the rivet tool in a damp/wet environment or in the vicinity of flammable liquids and gases (risk of explosion!) and protect from frost during storage.
- Ensure that the battery is properly secured in the grip.
- Do not open the battery.
- Always remove the battery when the rivet tool is not in use and during maintenance work.
- Do not use the rivet tool as a hammer.
- The air inlets for the motor must not be obstructed; do not insert any objects into them.

### **Specific safety instructions for blind rivet tools**



Hold the power tool only by the insulated grip surfaces when you perform work where the joining element can touch hidden power lines. Contact with a live line can also energise metallic device parts and cause an electric shock.

## **Battery**

Charge the battery before use. Do not recharge a fully-charged battery. Recharge the battery if the power diminishes. Keep the connection contacts and ventilation slots on the charger and battery clean.

### **Transport**

The user may transport batteries by road without additional conditions. Shipping of batteries is subject to dangerous goods legislation. Special requirements must

When working with the blind rivet tool, protective goggles must be worn at all times. Depending on the work situation, personal protective equipment (PPE) is recommended (e.g. protective clothing, gloves, safety helmet, non-slip shoes, ear protection or fall protection).

Do not work without joining material. The blind rivet can jump away from the blind rivet tool.

Never point the blind rivet tool at yourself or others.

The spent mandrel container must be attached at all times when using the blind rivet tool.

Never use or store the blind rivet tool in a humid/wet environment or in the vicinity of flammable fluids and gases (risk of explosion!) and protect against frost.

Make sure that the battery is firmly seated on the handle.

The battery must always be removed when not in use or during maintenance work on the blind rivet tool.

The blind rivet tool must not be used as a hammer or as a levering tool.

Keep the tool, batteries and charger away from children.

The ventilation holes for the motor must not be obstructed; do not insert any objects.

When setting down the blind rivet tool, it must be secured against falling.

be observed for packaging and labelling. If necessary, obtain information from your shipping company regarding current applicable regulations.

Ensure that the contacts are protected and insulated in order to avoid short circuits. Make sure that the battery cannot slide around inside the packaging.

Damaged or leaking batteries must not be transported.

## Intended use

The blind rivet tool is intended solely for setting blind rivets in accordance with the technical data and information in these operating instructions.

Modifications and changes to the tool are not permitted. Generally accepted accident prevention regulations and the safety instructions must be observed.

## Technical data

Blind rivet tool		Birdie®
Serial number		BM xxxxxxxxA...
Weight without battery		0.9 kg
Weight with 2.0 Ah Li-Power battery		1.3 kg
Stroke length		25 mm
Setting force		10000 N
Working range (max. mandrel dia. 3.5 mm)	Aluminium:	Ø 2.4 mm – Ø 6 mm
	Steel / stainless steel:	Ø 2.4 mm – Ø 5 mm
Permitted ambient temperature	Charging	0 °C ... +50 °C
	Operation	–20 °C ... +50 °C Limited power at temperatures below 0 °C
	Storage	0 °C ... 30 °C
Battery voltage		18 V
Permitted battery types		18 V CAS*
Recommended chargers		ASC 55*

\*Only use original 18 V Li-Ion GESIPA® or CAS (Cordless Alliance System) rechargeable batteries and accessories.

# Noise and vibration information

Sound pressure level $L_{pA}^*$	72,0 dB(A), measurement uncertainty $K_{pA} = 3$ dB(A)
Sound power level $L_{wA}^*$	83,0 dB(A) measurement uncertainty $K_{wA} = 3$ dB(A)
Vibration total value*	$< 2.5$ m/s <sup>2</sup> , measurement uncertainty $K = 1.5$ m/s <sup>2</sup>

\*measured in accordance with EN 62841-1

The specified vibration total value(s) and the specified noise emission value(s) were measured in accordance with a standardised test procedure and can be used for comparing one power tool with another.

The specified vibration total value(s) and the specified noise emission value(s) can also be used for a preliminary exposure assessment.

 **WARNING**











Vibration and noise emissions can deviate from the specified values during actual use of the power tool, depending on the manner in which the tool is used, especially the type of workpiece being worked on.

Define protective measures to safeguard the operator that are based on an estimation of vibration exposure during actual usage conditions. Here, all aspects of the operating cycle must be taken into account, for example, times at which the power tool is switched off and times at which the tool is switched on but running without load.

Wear ear protection.

EN

## Symbols

	WARNING – Read operating instructions to reduce the risk of injury		Do not dispose of electrical equipment, batteries/rechargeable batteries, accessories or packaging in household waste.
	ATTENTION! WARNING! DANGER!		Ensure that electrical equipment, batteries/rechargeable batteries, accessories and packaging are recycled in an environmentally responsible manner.
	Protect battery from fire and high temperatures.		European conformity symbol
	Protect battery from water and moisture.		British conformity symbol
	Accessories – Not included in the scope of delivery.		
<b>18 V</b>	Voltage: 18 volts		
	Direct current		

## Maintenance and service

---

Remove the battery from the tool before any maintenance work on the tool, as well as during transport and storage of the tool. There is a risk of injury if the on/off switch is operated unintentionally.

Keep the tool and ventilation slots clean in order to work effectively and safely.

Tool maintenance is limited to the grip mechanism and its wear parts only. Clean the jaws and the jaw pusher and oil or grease sliding surfaces. Replace the jaws if they are worn (blunt teeth) → see p. Seite 13

Parts for which a replacement procedure is not described must be replaced only by personnel with specialist knowledge, or by GESIPA® Service.

Regular maintenance extends the service life of your high-quality GESIPA® tools. It should be performed at least every 2 years by an authorised workshop or by GESIPA® Service. Servicing ahead of schedule is recommended if tools are subject to intensive use.

The latest spare parts list and exploded diagram for your tool, as well as information on GESIPA® Service, can be obtained online at [www.gesipa.com](http://www.gesipa.com).

### Repair

Repairs must be performed only by a suitable specialist. In case of doubt, the blind rivet tool must be sent in to GESIPA® Service.

Repairs under warranty are always performed by the manufacturer. Repairs outside of the warranty period must only be performed by skilled personnel. Failure to observe specifications for assembly and adjustment and operation by unskilled personnel can lead to severe damage to the blind rivet tool. In case of doubt, the blind rivet tool must be sent in to GESIPA® Service.

Only use original replacement parts for repairs.

## Disposal

---

Do not dispose of electrical equipment, batteries/rechargeable batteries, accessories or packaging in household waste.

As a consumer, you are obliged by law to dispose of old tools and batteries/rechargeable batteries at a recycling facility, collection point or retailer so that they can be recycled in an environmentally responsible manner.

Obtain information from local authorities or from your specialist retailer about recycling facilities and collection points.

Dangerous substances in power tools and batteries/rechargeable batteries can harm your health and the environment.

Batteries/rechargeable batteries must be removed from the device and disposed of separately in a discharged state. Cover contacts with adhesive tape to safeguard against a short circuit.

## Warranty

---

The warranty conditions in the currently valid version apply. They can be viewed at the following link: [www.gesipa.com/agb](http://www.gesipa.com/agb)

## Troubleshooting

Fault		Cause	Remedy
Blind rivet not set		Battery empty	Charge battery; replace if necessary
		Jaws dirty or worn	Clean and oil or grease sliding surfaces, replace if necessary
		Chuck mechanism loose	Screw tight
		Blind rivet outside of working range	Select blind rivet according to technical data
Rivet mandrel not removed		Nosepiece is too small	Replace in accordance with table
		Head sleeve dirty inside	Clean
		Spent mandrel container full	Unscrew and empty
		Mandrel channel jammed	Remove jammed mandrels and make sure subsequent ones are ejected cleanly
		Blind rivet outside of working range	Select blind rivet according to technical data
LED lights flashing	white – slow flashing	Battery empty	Replace battery
	red – continuously lit white – slow flashing	Wrong battery	Insert correct battery
	white – continuously lit red – rapid flashing	Blind rivet tool overloaded – riveting process aborted	Select rivet dimensions according to working range.
	white – rapid flashing	Blind rivet tool blocked on return stroke	Unscrew head sleeve and remove blockage
	red – slow flashing	Temperature warning – device shutdown imminent	Pause work
	red – continuously lit	Temperature stop – device overheated/ too cold	Allow device to cool down/warm up
	red – rapid flashing white – rapid flashing	Motor blocked	Repair by GESIPA® Service

EN

## EU conformity declaration

---

We declare under our sole responsibility that the stated product complies with all relevant provisions of the directives and regulations listed below and conforms to the following standards and specifications:

Birdie® blind rivet tool

BM xxxxxxxxxA...

2006/42/EC  
2014/30/EU  
2011/65/EU  
EN 62841-1:2015  
EN 55014-1:2021  
EN 55014-2:2021  
EN 63000:2018

Authorised to compile technical documentation:

SFS Group Germany GmbH  
Division Riveting – GESIPA®  
Nordendstrasse 13–39  
D-64546 Mörfelden-Walldorf  
Germany

Mörfelden-Walldorf, 2023-02-03



pp. Stefan Petsch

## UKCA conformity declaration

---

We declare under our sole responsibility that the stated product complies with all relevant provisions of the directives and regulations listed below and conforms to the following standards and specifications:

Birdie® blind rivet tool

BM xxxxxxxxxA...

The Supply of Machinery (Safety)  
Regulation 2008

The Electromagnetic Compatibility  
Regulations 2016

The Restriction of the Use of Certain  
Hazardous Substances in Electrical and  
Electronic Equipment Regulations 2012

EN 62841-1:2015  
EN 55014-1:2021  
EN 55014-2:2021

Authorised to compile technical documentation:

SFS Group Germany GmbH  
Division Riveting – GESIPA®  
Nordendstrasse 13–39  
D-64546 Mörfelden-Walldorf  
Germany

Mörfelden-Walldorf, 2023-02-03



pp. Stefan Petsch

SFS Group Germany GmbH  
Division Riveting – GESIPA®  
Nordendstrasse 13–39  
D-64546 Mörfelden-Walldorf  
Germany

T +49 (0) 6105 962 0  
F +49 (0) 6105 962 287  
info@gesipa.com  
www.gesipa.com

02/2023 | 1746764

